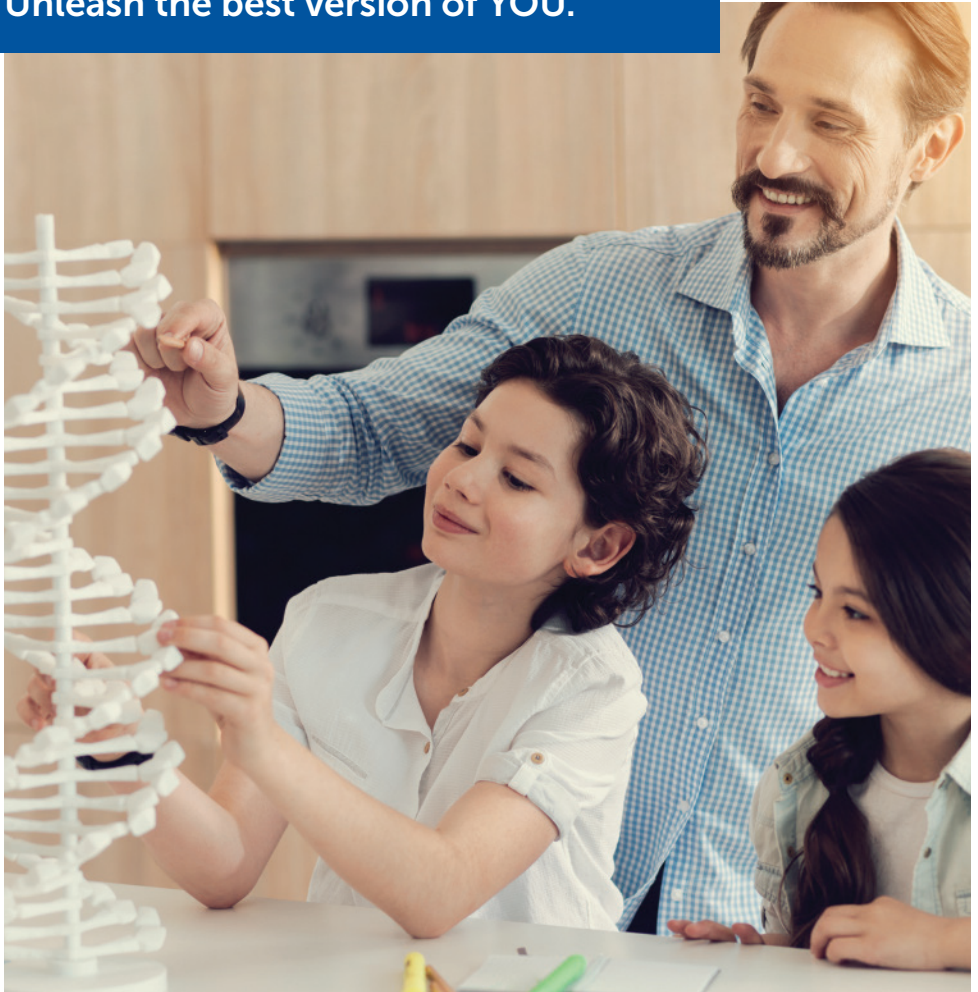




Laboratoire Médical

Unlock the power of DNA,

Unleash the best version of YOU.



GENETIC PANELS

Page

05

MapmyGenome
Health & Wellness

Page

06

MapmyGenome
Immunity

Page

07

MapmyGenome
Fitness

Page

08

MapmyGenome
Nutrition

Page

09

MapmyGenome
Cardiovascular

Page

10

MapmyGenome
Gynaecology

Page

11

MapmyGenome
Ancestry

Page

12

Our Collection
Centres





ABOUT C-LAB

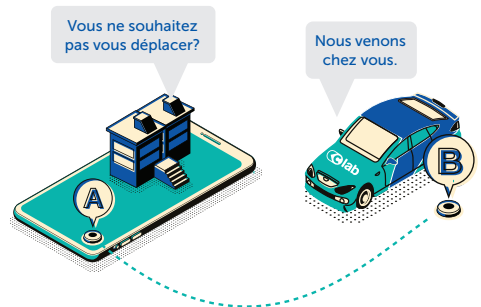
C-Lab regroups our laboratory services available at C-Care Darné, C-Care Wellkin, C-Care Grand Baie and C-Care Tamarin. Our labs are ISO accredited (ISO 15189:2012) and deliver reliable and accurate test results in a timely manner to help doctors in their diagnosis.

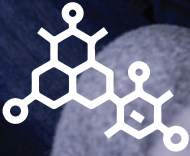
C-lab has different collection points across the island, namely;



*Coming Soon

We also provide home collection services for people who are unable to come to the laboratory.





ABOUT MAPMYGENOME

The scientific team at MapmyGenome are experts with 20+ years of experience in genomics. They use state-of-the-art equipment like the Illumina Microarray for gene expression analysis.

Unlock the power of DNA, Unleash the best version of YOU.

Your DNA holds vital information about you, like the predisposition to genetic disorders, nutritional requirements, metabolic potential, drug response, immunity, ancestral linkages, etc. Genomics based testing empowers you to take control of your health and will enable you to greatly improve your quality of life.

With a simple, non-invasive saliva or cheek swab sample, you can decode your DNA to develop a personalised nutritional profile, fitness regime and an appropriate healthcare plan.



MapmyGenome Health and Wellness Panel

A comprehensive assessment of genetic risks for lifestyle diseases including cardiovascular, respiratory and neurological health risks as well as cancer risks and responses to specific drugs.

Evaluates ~750,000 marker genes for SNPs

Tests included in the panel:



Lifestyle Health Risks

Diet pattern, Vitamin deficiencies, Nicotine dependence, Obesity, Skin and Health related risks, etc.



Cardiac Health Risks

Cholesterol, Cardiac arrest, Coronary heart disease.



Respiratory Health Risks

Asthma, Lupus, Addictions (nicotine) and Cancer.



Immunological Health Risks

Crohn's, Multiple sclerosis, Rheumatoid arthritis, Vitiligo.



Diabetic Health Risks

Type 1 and Type 2 Diabetes, associated risk factors.



Cancer Health Risks

15+ cancers (lung cancer, prostate, breast, bladder, pancreatic cancer, etc.)



Neurological Health Risks

Parkinson's, Alzheimer's, Resilience, ALS, bipolar disorder, schizophrenia.

Tests prices include a post Genetic Counseling session online

Rs 12,600



MapmyGenome Immunity Panel

Assessment of various factors affect the way your body will generate an immune response against bacteria and viruses and these include your nutrient status, lifestyle, sleep, exercise etc.

Genes govern your immune response and expressing specific genes will make you more susceptible to certain infections (e.g; susceptibility to viruses including coronavirus).

This panel will help you discover and explore your body's Genetic immune response.

Tests included in the panel:



Health risks which compromise immunity

Sleep depth, Hypertension, Nicotine dependence, Type 2 diabetes, Coronary heart disease, Asthma, Lupus, Psoriasis



Nutritional needs for better immunity

Vitamin C, Vitamin D, Biotin, Iron



Antiviral drug response & risk for adverse effects

Chloroquine, Abacavir, Atazanavir, Ibuprofen, Nevirapine



Genetic susceptibility to severe infections like COVID-19

SARS-CoV susceptibility, Cytokine storm, COVID-19 severity

Tests prices include a post Genetic Counseling session online

Rs 9,100



MapmyGenome Fitness Panel

This panel decodes genes which are linked to your personalised fitness assessment. A carefully designed panel targeting 40+ hand-picked parameters which affects nutrition, fitness and wellness of an individual.

Tests included in the panel:



Nutrition

Sleep apnea, Hypertension, Nicotine dependence, Type 2 diabetes, Coronary heart disease, Asthma, Lupus, Psoriasis



Fitness

From sports/muscle performance, to injury/ disease susceptibility.

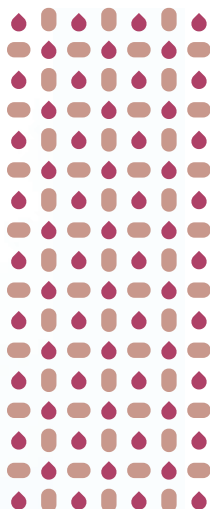


Wellness

From addiction probabilities (caffeine/ alcohol/nicotine) to hypothyroidism, chronic kidney disease and PSA levels for prostate cancer

Tests prices include a post Genetic Counseling session online

Rs 12,600



MapyGenome Nutrition Panel

It is evident that a percentage of the population respond positively to specific diets, while others will be unresponsive or may experience adverse effects.

The different responses are because every human is different and unique according to the specific genes they express.

This panel decodes your personalised diet/nutrition, with maximum efficiency and positive response from your body.

Tests included in the panel:



Nutrient requirements

Vitamin B6, Vitamin B12, Vitamin B9, Vitamin C, Vitamin D, Poly Unsaturated Fatty Acids, Antioxidants



Dietary sensitivities

Gluten intolerance, Lactose intolerance, Peanut allergy, Alcohol sensitivity, Caffeine consumption, Carbohydrate sensitivity, Fat sensitivity



Diet pattern

BMI, Satiety, Eating behaviour

Tests prices include a post Genetic Counseling session online

Rs 10,600



MapmyGenome Cardiovascular Panel

This panel gives you a genetics-based cardiac risk profile, with your predisposition to common cardiovascular diseases and associated risk factors (obesity and imbalanced lipid metabolism).

A personalised plan can be created for cardiac disease prevention based on the results.

Tests included in the panel:



Cardiovascular disease
Atrial fibrillation, Sudden cardiac arrest, Myocardial infraction, Coronary heart disease, Heart failure, Stroke, Hypertrophic cardiomyopathy



Traits
Homocysteine levels, QT interval



Blood pressure
Hypertension



Lipid levels
LDL - Cholesterol levels, HDL - Cholesterol levels, Triglycerides, Obesity



Drug responses
Atorvastatin, Pravastatin, Simvastatin, Metformin, Warfarin, Clopidogrel



Lifestyle
Type I diabetes, Type II diabetes, Alcohol dependence, Alcohol flush reaction, Nicotine dependence, Diet pattern

Tests prices include a post Genetic Counseling session online

Rs 10,600



MapmyGenome Gynecology Panel

This women's wellness predictive panel will reveal your genetic predisposition to key functions of a women's health, for example:

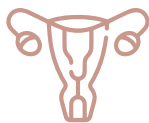
- Endocrine system
- Reproductive system
- Bone health
- Obesity/lipid levels
- Lifestyle traits and cancer predisposition.

Tests included in the panel:



Fitness & Lifestyle

Obesity, Diet pattern, Alcoholism, Skin detox, Vitamin B6, Vitamin B9, Caffeine Consumption, PUFA, Bone Mineral Density



Endocrine & Reproductive health

Hypothyroidism, Age at menarche, Early menopause, Endometriosis



Cancer

Breast cancer, Ovarian cancer, Thiopurines



Heart Health & Diabetes

Breast cancer, Ovarian cancer, Thiopurines

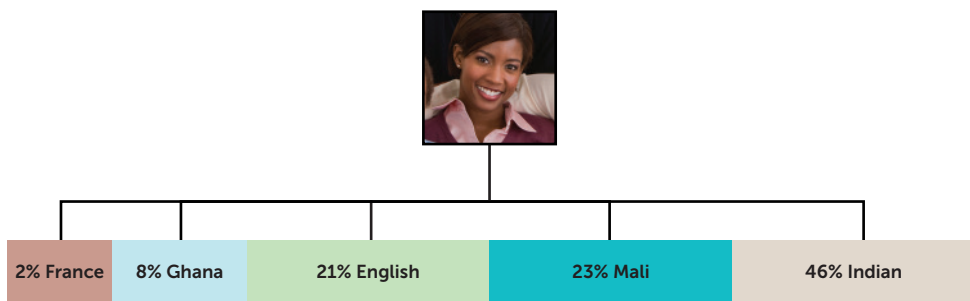
Tests prices include a post Genetic Counseling session online

Rs 12,600



MapmyGenome Ancestry Panel

This panel reveals your true origins by Single nucleotide polymorphism (SNP) mapping from more than 20,000 records worldwide. Delve into your genetic legacy by exploring your cultural, ethnic and geographical diversity.

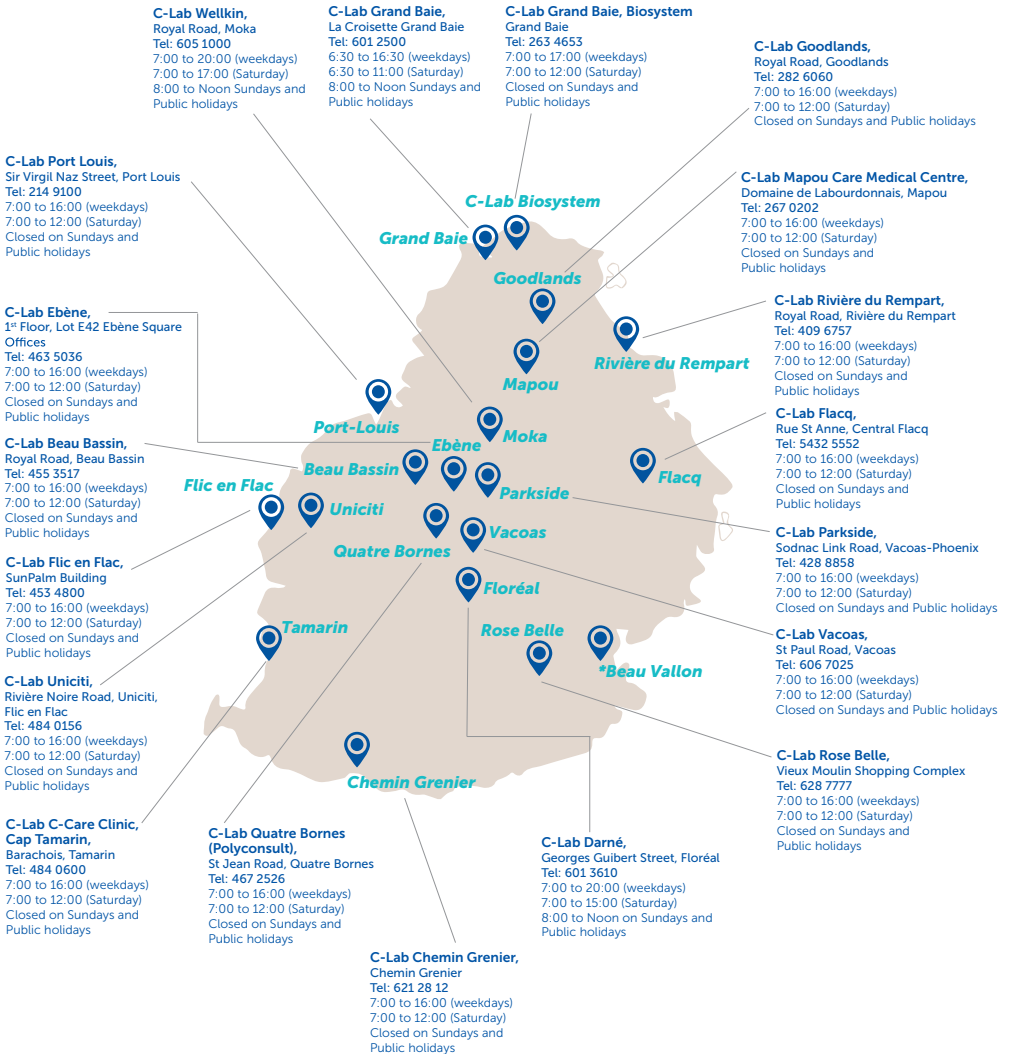


Tests prices include a post Genetic Counseling session online

Rs 8,800



Laboratoire Médical



*Coming Soon